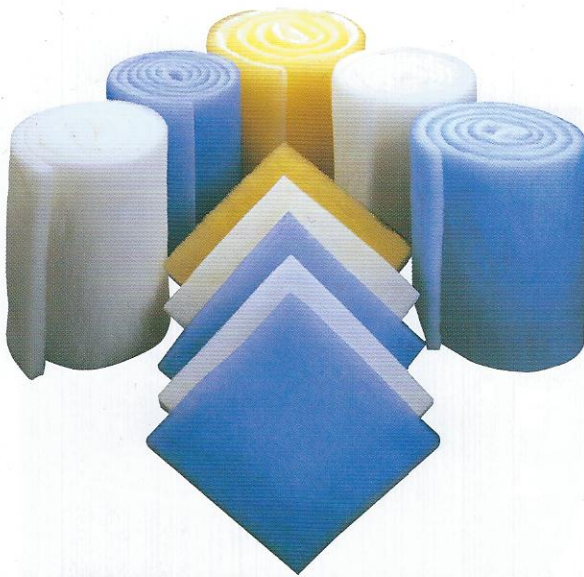


POLYESTER MEDIA

MANUFACTURED BY FIBER BOND



WHY FIBER BOND POLYESTER

- ◆ CONSISTENCY
- ◆ DRY OR TACKIFIED MEDIA
- ◆ ONE-HALF, ONE, TWO INCH
- ◆ U.L. CLASS 2
- ◆ 100% SYNTHETIC
- ◆ ROLLS, PRE-CUT PADS, POLY-PERF®

PRODUCT CONSISTENCY

Fiber Bond FM and FP series polyester media are manufactured at Fiber Bond.

The airlaid principle of Fiber Bond media is to randomly disperse fibers in all directions throughout the web. This forms a uniform, high strength media. Contaminants are trapped within the total media. True depth loading.

FM SERIES DRY MEDIA

Fiber Bond FM polyester series combines quality, consistency and economy.

MERV 6 in a 1/2", 1" and 2" thickness.

FP SERIES BLUE TACK MEDIA

The FP series has a uniform coating of tackifier in the blue air leaving side of the media. This locks trapped dirt in the media.

MERV 6 in a 1/2" thickness.

MERV 7 in a 1" and 2" thickness.

APPLICATIONS

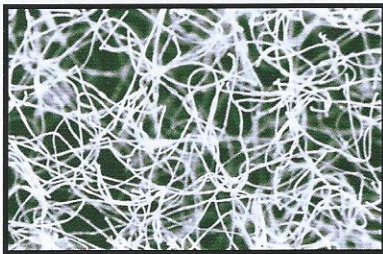
In pad and frame or blanket use.

- ★ STEEL MILLS
- ★ OFFICE BUILDINGS
- ★ FACTORIES
- ★ SCHOOLS
- ★ CONSTRUCTION
- ★ HOTELS

**"THE BEST FILTERS
COME FROM THE BEST MEDIA"**

TECHNICAL DATA

- MERV 6 & 7 - ASHRAE 52.2-1999
- Operating temperature up to 200° F.
- FM Series - Dry media, FP Series - Tackified media.
- Low initial resistance at 295 fpm.



Random dispersion of fibers for true depth loading.



MEDIA	TYPE	COLOR	THICKNESS	ROLL LENGTH	WEIGHT oz./yd ²	DENSITY lbs/ft ³	RESISTANCE 295 fpm	MERV VALUE
FM 25	DRY	ALL WHITE	1/4"	270'	3.5	0.61	0.06"	N/A
FM 50	DRY	ALL WHITE	1/2"	135'	4.2	0.44	0.09"	6
FM 100	DRY	ALL WHITE	1"	90'	5.9	0.45	0.15"	6
POLY II	DRY	YELLOW/WHITE	2"	60'	7.9	0.33	0.13"	6
FP 50	TACK	BLUE/WHITE	1/2"	135'	4.8	0.50	0.11"	6
FP 100	TACK	BLUE/WHITE	1"	90'	6.4	0.48	0.16"	7
FP 200	TACK	BLUE/WHITE	2"	60'	10.0	0.42	0.13"	7

Particle Size Removal Efficiencies Conducted by LMS Technologies (2006 and 2007)